

ACADEMIC CALENDAR

- 4 Freshman Convocation and Opening Exercises.
- 5 First Day of Classes.
- 21 Course Selection Period ends.

CHILDREN’S ACTIVITIES

Morris Arboretum
Free with admission unless otherwise noted. Register: (215) 247-5777; www.morrisarboretum.org

5 Back to School Nature Yoga; ages 10-14; 4:30 p.m.; \$95, \$80/members. Continues September 12, 19 and October 3.

9 Grandparents Day; bring your grandparent to Morris Arboretum; 10 a.m.-5 p.m.; free/members, \$5/children with grandparents, \$7/children without, \$14/seniors, \$16/adults.

23 How Does Nature Inspire you? Kids Art Series; ages 6-12; 1 p.m.; \$100, \$85/members. Continues September 30, October 14, 21.

25 Storytime in the Morris Arboretum; 10:30 a.m.

27 Seeds to Sprouts, Autumn Adventures!; introduces toddlers to the wonders of the natural world; ages 2-4; 1 p.m.; \$85/members, \$100/non-member. Continues October 4, 11, 18, 25, and November 1, 10:30-11 a.m.

Penn Museum
Info.: www.penn.museum

9 Pharaoh Fantasies; create your own Egyptian crown; 1 p.m.; free with admission.

World Cafe Live: Peanut Butter and Jams
Tickets: www.worldcafelive.com
Shows begin 11:30 a.m.; \$10, \$7/children.

22 Beatles & Bubblegum; interactive show that explores the Beatles and 60s pop.

29 The Dirty Sock Funtime Band; kid-oriented rock music.

CONFERENCES

14 Chemical Biophysics Mini Symposium on Biological Thermodynamics; 11 a.m.-6 p.m.; Lynch Room, Chemistry Bldg. (Chemistry).

21 Structural Estimation of Behavioral Models: A Conference in Honor of Kenneth I. Wolpin; 10:30 a.m.-4:30 p.m.; rm. 240, Jon M. Huntsman Hall. Continues September 22, 10:30 a.m.-4:30 p.m. (Economics).

Enchanted Drawing II: Animation Across the Disciplines; 3:30-7 p.m., followed by screening at International House; ICA; info.: Nicola Gentili, ngentili@sas.upenn.edu (ICA). Continues September 22, 8:15 a.m.-6 p.m.

27 Philadelphia Experiments in Crime and Justice; 9:30 a.m.-4 p.m.; McNeil Center for Early American Studies (Jerry Lee Center of Criminology).

28 Libraries, Labs, and Classrooms: Locating the Digital Humanities; Nicole Coleman, Stanford University; Neil Freistat, Maryland Institute for Technology; John Unsworth, Brandeis University; 9 a.m.-noon; Rainey Auditorium, Penn Museum; RSVP: <http://humanities.sas.upenn.edu/registration.shtml> (Penn Humanities Forum).

Violence Against Women; includes highlights of the current research from the Ortner Center with a keynote address by Jimmie Briggs, former Wall Street Journal reporter; 10 a.m.-2:30 p.m.; International House; register: www.sp2.upenn.edu/ortner/learning/index.html (Ortner Center on Family Violence).

EXHIBITS

Admission Donations and Hours
Annenberg Center: Mon.-Thurs., 10 a.m.-5 p.m.; Fri., 10 a.m.-1 p.m.; www.annenbergcenter.org
Arthur Ross Gallery, Fisher Fine Arts Library: free; Tues.-Fri., 10 a.m.-5 p.m.; Sat.-Sun., noon-5 p.m.; www.upenn.edu/ARG/
Brodsky Gallery, Kelly Writers House: free; Mon.-Thurs., 10 a.m.-10:30 p.m.; Fri. 10 a.m.-5 p.m.; Sat. noon-11 p.m.; Sun. 6-11 p.m.



An Ashanti Gold Weight from Ghana (1912), from the Imagine Africa! exhibit at Penn Museum. The weight would have been used as a counterbalance to weight gold dust during trade, and depicts a Sankofa bird, a symbolic reminder to look back and learn from the past. On Saturday, September 15, the Museum will host a Free Community Afternoon in conjunction with the exhibit, featuring African storytelling, musical performances, dance workshops, and more. See Special Events.

Burrison Gallery, University Club at Penn: free; Mon.-Fri., 7:30 a.m.-5 p.m.; Sat.-Sun., 7 a.m.-1 p.m.; www.upenn.edu/universityclub/burrison.shtml
Carol Ware Lobby, Fagin Hall: free; Mon.-Fri., 9 a.m.-5 p.m.

Institute of Contemporary Art (ICA): free; Wed., 11 a.m.-8 p.m.; Thurs. and Fri., 11 a.m.-6 p.m.; Sat. and Sun., 11 a.m.-5 p.m.; closed Monday and Tuesday. Galleries closed through September 18, but offices are open; www.icaphila.org
Kroitz Gallery: free; Mon.-Fri., 9 a.m.-5 p.m.; www.design.upenn.edu/archives/archives/index2.htm
Morris Arboretum: Mon.-Fri., 10 a.m.-4 p.m.; Sat.-Sun., 10 a.m.-5 p.m.; for prices, see www.upenn.edu/arboretum/
Penn Museum: \$12/adults; \$10/seniors (65+); \$8/children (6-17); free/members, PennCard holders and children under 5; Tues., Thur.-Sun, 10 a.m.-5 p.m.; Wed, 10 a.m.-8 p.m.; www.penn.museum
Slought Foundation: free; Thur.-Sat., 1-6 p.m.; www.slought.org
Van Pelt-Dietrich Library; free/ID required; for hours see <http://events.library.upenn.edu/cgi-bin/calendar.cgi>

Upcoming

4 Paper: A Deckled Edge—The Paper Artwork of Lesley Haas; Kamin Gallery, Van Pelt-Dietrich Library. Through February 15.

13 Imaginary Gardens, Real Toads: Paintings and Prints by Kaitlin Pomerantz; 6 p.m.; Brodsky Gallery. Through October 26.

19 Jeremy Deller: Joy in People; a retrospective featuring installations, photos, videos, posters and performance works; ICA; reception: 6 p.m. Through December 30.

20 Uncommon Modern: Commercial Vernacular Architecture in Greater Philadelphia, 1937-1970; photographs and rare original drawings; reception: 6 p.m.; Kroitz Gallery. Through January 18.

26 Excursus III: Ooga Booga; ICA; reception: 6:30 p.m. Through December 16.

29 Judy Gelles; photography; Burrison Gallery; reception: October 4, 5 p.m. Through November 9.

Now

Garden Railway: Painted Ladies, Colorful Victorian Home Replicas; miniature world set in a garden; Morris Arboretum. Through September 5.

Imagine Africa with the Penn Museum; community engagement project drawing on the Museum’s African collection and visitor feedback; Penn Museum. Through September 16.

Marie Yoho Dorsey; textile art; Burrison Gallery. Through September 28. See Special Events.

Run! Super-Athletes of the Sierra Madre; 30 contemporary color photographs of the Tarahumara people of the Sierra Madre in Chihuahua, Mexico by Diana Molina; Penn Museum. Through September 30. See Talks.

California Impressionism: Masters of Light; Arthur Ross Gallery. Through October 28.

Silver Bells and Oscar Gold: Ray Evans in Hollywood; letters, photographs, sheet music, record albums, and Academy Awards Mr. Evans received; Eugene Ormandy Gallery, Otto E. Albrecht Music Library, 4th fl., Van Pelt-Dietrich Library. Through October 29.

MAYA 2012: Lords of Time; a journey through the Maya’s time-ordered universe, expressed through their intricate calendar systems; \$22.50, \$18.50/seniors, \$16.50/children & students; Penn Museum. Through January 13. See Talks.

Resolved? God Does Not Exist; sampling of the library’s collection; first floor, Van Pelt-Dietrich Library. Through February 24.

Van Pelt at 50; photographs from throughout the library’s history; first floor, Van Pelt-Dietrich Library. Through February 24.

Ongoing

John Cage: How to Get Started; interactive installation of a rarely heard performance; Slought Foundation.

Human Evolution: The First 200 Million Years; Hover Gallery, 2nd fl., Penn Museum.

The History of Nursing as Seen Through the Lens of Art; Carol Ware Lobby, Fagin Hall.

Amarna: Ancient Egypt’s Place in the Sun; Worlds Intertwined: Etruscans, Greeks and Romans; Canaan & Ancient Israel; Living in Balance: The Universe of the Hopi, Zuni, Navajo and Apache; Mesoamerica; The Egyptian Mummy: Secrets & Science; Buddhism: History & Diversity of a Great Tradition; Africa; Iraq’s Ancient Past: Rediscovering Ur’s Royal Cemetery; On the Silk Road: Tashkent; Penn Museum.

Penn Museum Tours
Tours begin at 1:30 p.m., Warden Garden Entrance. Tour availability and topics subject to change. Free w/ admission. Info.: www.penn.museum

8 China.

9 Etruscan/Roman.

15 Etruscan/Roman.

16 Egypt.

22 Canaan/Ancient Israel.

23 Egypt.

29 Canaan/ Ancient Israel.

30 Etruscan/Roman.

P.M. @ Penn Museum
Galleries stay open until 8 p.m., with a half-hour gallery tour at 5:30 p.m. Free w/ admission. Info.: www.penn.museum

12 2nd Wednesday Quizzo; compete for prizes; 6 p.m.

FILMS

9 Smokin’ Fish; 2 p.m.; free w/ admission; Penn Museum (Penn Humanities Forum).

13 Andrew’s Video Vault: Dementia, Freud; 8 p.m.; The Rotunda (The Rotunda).

26 Terminator 2: Judgment Day; 7:30 p.m.; \$10/adults, \$7/seniors, \$6/children and students, free/members, children under 5; Penn Museum (Museum).

Center for East Asian Studies
6:30 p.m.; rm. 402, Claudia Cohen Hall; info.: (215) 573-4203.

12 Monsters of Japan: Gojira.

19 Monsters of Japan: Mothra.

26 Monsters of Japan: Gidrah the Three Headed Monster.

International House
Tickets \$9, \$7/students; 7 p.m. unless otherwise noted. Purchase at <http://ihousephilly.org>.

7 The Last Angel of History; Seven Songs for Malcolm X.

8 The Nine Muses.

13 The Love Parade.

14 The Thief of Mirrors; Looking for Love in the Hall of Mirrors.

16 Elena and Her Men.

19 Marina Abramovic: The Artist is Present; SSS; 7:30 p.m.

20 Slavery By Another Name; 6 p.m.

21 The Enchanted Drawing.

22 The Observers; 8 p.m.

27 Project Twenty1 Film & Animation Festival; continues September 28, 29, 30.

MEETINGS

11 WXPN Policy Board Meeting; noon; WXPN, 3025 Walnut St. Info: (215) 898-0628.

14 PPSA Board Meeting; noon; LGBT Center; RSVP: ppsa@exchange.upenn.edu

20 WPPSA Election; 12:30 p.m.; Forum, Stittler Hall; nominations by September 12 to lsatchell@pobox.upenn.edu
Board of Trustees: Budget & Finance Committee: 9-10 a.m.; Executive Committee: 10:05-10:30 a.m.; Class of ’49 Auditorium, Houston Hall; RSVP: (215) 898-7005.

28 PPSA Board Meeting; noon; Penn Abroad Office; RSVP: ppsa@exchange.upenn.edu

MUSIC

4 Peter Brötzmann & Jason Adasiewicz; Chris Corsano & Bill Orcutt; experimental/free jazz; 8 p.m.; \$15; International House.

5 Instructional Drum Circle; 6:30 p.m.; Wednesdays, weekly; \$15, \$10/ student. Through October 24 (Museum).

22 John Coltrane’s A Love Supreme; Bobby Zankel’s Warriors of the Wonderful Sound featuring Dave Liebman and Odean Pope; 6 p.m.; 40th and Walnut (University City District).

World Cafe Live
Performances daily. For a complete listing see <http://philly.worldcafelive.com/>
WXPN Free at Noon Concert Series; Fridays at noon.

ON STAGE

6 Fall Arts Preview; musical performances by Arc in Round and Robotique; screening of Gérard Courant’s Cinématon; presentation from IHP curators; 7 p.m.; International House; RSVP: www.ticketfly.com/org/847 (IHP).

9 The Primary English Class By Israel Horowitz; Small Fall; Theatre Arts Council; 2 p.m.; Iron Gate Theatre; \$5, free for freshmen. Also 8 p.m.

13 Antony and Cleopatra; Underground Shakespeare Company; 8 p.m.; Penn Museum; \$20, \$10/PennCard, \$5/ students; tickets: www.livearts-fringe.org (Rodin College House).

Annenberg Center
Tickets: www.annenbergcenter.org

21 Artists & Audiences Changing Lives; mini poetry slam featuring the Philly Youth Poetry Movement; precedes Red, Black & Greed; 6:30 p.m.; Zellerbach Theatre.

Red, Black & Greed: A Blues; Marc Bamuthi Joseph’s spoken word/hip hop performance on how urban communities respond to environmental issues rooted in their own neighborhoods; 7:30 p.m.; Zellerbach Theatre; \$35. Also September 22, 8 p.m.

22 Online StorySlam Video Contest; four finalists share their stories about community; 7 p.m.; Zellerbach Theatre.

28 The Giant Squid; The Berserker Residents and Swim Pony Performing Arts; 8 p.m.; \$20-30; Harold Prince Theatre. Also September 29.

University Life Arts Initiative
Tickets: Locust Walk.

5 Glee Club Show; 8 p.m.; Hall of Flags, Houston Hall; \$5, free/freshman.

8 Freshman Performing Arts Night; more than 40 groups performing; 7 p.m.; Zellerbach Theatre, Annenberg Center; \$8, \$5/new students.

Mask & Wig Free Show; 8 p.m.; Zellerbach Theatre, Annenberg Center.

22 Alternative Theatre Festival; iNtuitions Experimental Theatre; 8 p.m.; Muravchick Cabaret Stage, Platt House; \$7; tickets: <http://livearts-fringe.ticketleap.com/alternative-theatre-festival/>

September

AT PENN

Wherever these symbols appear, more images or audio/video clips are available on our website, www.upenn.edu/almanac

READINGS/SIGNINGS

18 West with the Night; by Beryl Markham; monthly book club discussion for Penn staff; 1 p.m.; Meyerson Conference Room, Van Pelt-Dietrich Library; info.: (215) 898-0876 (Penn Libraries).

27 The Searchers: A Quest for Faith in the Valley of Doubt; Joseph Loconte; book signing; 1:30 p.m.; Christian Association (Christian Association).

Kelly Writers House
Info.: <http://writing.upenn.edu/wh/>

11 New Queer Jewish Writing: Dan Fishback and Ezra Berkley Nepon; 6 p.m.

12 Speakeasy; open mic night; 7 p.m.

19 Careers in Journalism and New Media; 5 p.m.

20 Whenever We Feel Like It: Jordan Stempleman and Mark Nowak; 6 p.m.

24 Live at the Writers House Presents...; 7 p.m.

27 Fiction Reading by Eileen Pollack; 6 p.m.

Penn Bookstore
Info.: www.upenn.edu/bookstore

4 Chorus: A Literary Mixtape; Saul Williams; 6 p.m.

7 How Children Succeed: Grit, Curiosity, and the Hidden Power of Character; Paul Tough, editor, New York Times Magazine; 4 p.m.

13 Independents Rising: Outsider Movements, Third Parties and the Struggle for a Post-Partisan America; Jackie Salit; 6 p.m.

20 The Shadow Scholar: How I Made a Living Helping College Kids Cheat; Dave Tomar; 6 p.m.

27 Cemetery John: The Undiscovered Mastermind of the Lindberg Kidnapping; Robert Zorn; 6:30 p.m.

SPECIAL EVENTS

University Square Farmers’ Market; 9 a.m.-4 p.m.; 36th and Walnut Sts.; every Wednesday (Business Services).

6 Greenfield Intercultural Center Open House; 4-6 p.m.
We Are Family Reception; introduces incoming undergraduate, graduate, and professional students of African descent to some of the various resources available at Penn; 4-6 p.m.; Hall of Flags, Houston Hall (AARC; Center for Africana Studies; Makuu).

Christian Association Open House; includes light dinner and refreshments; 6-7:30 p.m. Also September 11.

7 Kelly Writers House Open House; 1 p.m.

11 Penn Vet Working Dog Center Opening; ceremony honoring and welcoming work dogs; 10:30 a.m.; South Bank Campus, 3401 Greys Ferry Avenue (Penn Vet).

Intercultural Barbeque; with Makuu, Pan-Asian American Community House and La Casa Latina; 3-5 p.m.; College Green.

12 Pan-Asian American Community House Open House; 2:30-4:30 p.m.; Class of ’49 Auditorium, Houston Hall.

13 Social Action Lab Open House; learn about research opportunities at the new Annenberg facility; 3-5 p.m.; rm. 196 and 225, Annenberg School; info.: Molly Ireland, mireland@asc.upenn.edu (Annenberg School).

La Casa Latina Open House; 4-6 p.m.; Class of ’49 Auditorium, Houston Hall.

14 Makuu Open House; 3-5 p.m.; Class of ’49 Auditorium, Houston Hall.

15 Imagine Africa: Free Community Afternoon; African storytelling, safari face painting, African drum, hip hop dance workshops and a film screening; 1-5 p.m.; Penn Museum; free admission (Museum). See Exhibits.

16 Monsters: A Workshop and Happening; participants build and battle with mechanical ‘foals’; 2:30 p.m. workshop, 4 p.m. performance; Penn Museum; free w/ admission (Museum).

17 Constitution Day; campus-wide programming including information for voter registration (Office of Government and Community Affairs).

18 GradFest 2012; opening day of a week-long celebration for Penn grad students; 6 p.m.; Michael A. Fitts Auditorium, Penn Law School; free for grad students, \$5/undergrads; info.: www.gapsaupenn.com (GAPSA).

19 Penn Home Ownership Services Annual Housing Fair; housing information and resources; 3-6 p.m.; Hall of Flags, Houston Hall (Penn Home Ownership Services).

20 Grand Opening of Shoemaker Green; food and entertainment; noon-2 p.m. LGBT Center Open House; 4-6 p.m.; Carriage House.

Baltimore Avenue Summer Stroll; visit participating merchants for \$1 specials; 5:30-8:30 p.m.; Baltimore Ave. from 42nd St. to 50th St. (University City District).



Denise Corliss and her dog, Bretagne, at Ground Zero, where both worked as FEMA responders. The Penn Vet Working Dog Center opening on September 11 will honor Bretagne and two other dogs that worked in NYC after the 9/11 attacks; the first five puppies to enroll at the Center will also be introduced. Visitors will be able to view demonstrations, listen to remarks from Homeland Security officials, and tour the Center. See Special Events.

22 Skimmer Fest; a celebration of Penn school spirit prior to the first home football game of the season; noon-3:15 p.m.; College Green and Hill Field (SPEC).

Plein Air Painting Competition; \$100 prize open to the Penn community and members of the Arthur Ross Gallery and Morris Arboretum; register: arg@pobox.upenn.edu (ARG; Arboretum). Continues September 23. See Exhibits.

28 Arts & Culture Fair; 30 organizations offering discounts, raffle prizes and more; 11 a.m.; Wynn Commons (University Life Arts Initiative).

MOBILIZE 2012; learn about political participation on campus and register to vote while enjoying treats and performances by student groups; 11 a.m.-3 p.m.; College Green (Penn Leads the Vote).

SPORTS

Tickets & venues: www.pennathletics.com

7 (W) Soccer vs. Marist; 5 p.m.
(M) Soccer vs. Air Force; Penn Soccer Classic; 7:30 p.m.

8 Sprint Football; Alumni Game; noon.

9 (M) Soccer vs. Hartford; Penn Soccer Classic; 1 p.m.

12 Field Hockey vs. Rider; 7:15 p.m.

14 Volleyball vs. George Mason; Crowne Plaza Philadelphia West Penn Invitational Tournament; 7 p.m.
(M) Soccer vs. Villanova; Ivy League/BIG EAST Challenge; 7:30 p.m.

15 Volleyball vs. Radford; Crowne Plaza Philadelphia West Penn Invitational Tournament; 11 a.m.

Volleyball vs. Rutgers; Crowne Plaza Philadelphia West Penn Invitational Tournament; 5 p.m.

21 (W) Tennis; Cissie Leary Invitational; all day. Through September 23.
(W) Soccer vs. Harvard; 7 p.m.

22 Field Hockey vs. Harvard; noon.
Football vs. Villanova; 3:30 p.m.
Volleyball vs. Princeton; 5 p.m.

23 (W) Soccer vs. Boise State; noon.
Volleyball vs. Towson; 4 p.m.

28 (M) Tennis; Penn Invitational; all day. Through September 30.

30 (W) Soccer vs. NJIT; 1 p.m.

Almanac

3910 Chestnut St., 2nd Floor
Philadelphia, PA 19104-3111
(215) 898-5274 or 5275 FAX (215) 898-9137
E-mail: almanac@upenn.edu
URL: www.upenn.edu/almanac

Unless otherwise noted, all events are open to the general public as well as to members of the University. For building locations, call (215) 898-5000, or see www.facilities.upenn.edu or the University’s website, www.upenn.edu. A phone number normally means tickets, reservations or registration required.

Almanac carries an Update with additions, changes & cancellations if received by Monday at noon for the following week’s issue. University members may send notices for the Update or October AT PENN calendar.

Events on this calendar are subject to change. More information can be found on the sponsoring department’s website. Sponsors are listed in parentheses.

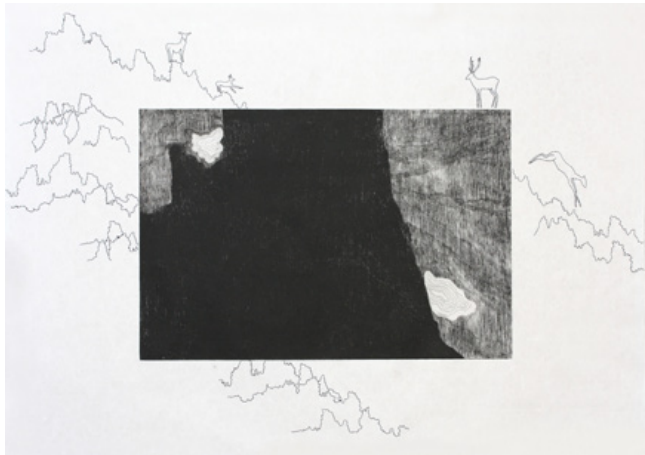
TALKS	TALKS	TALKS	FITNESS/LEARNING	
<p>4 <i>Micro Theory Seminar</i>; Ali Jadbabaie, electrical & systems engineering; 3:30 p.m.; rm. 395, McNeil Bldg. (Economics).</p> <p><i>New Techniques in Equine Fracture Repair</i>; Dean Richardson, equine surgery; 5:30 p.m.; Woerner Amphitheatre, New Bolton Center (Penn Vet).</p> <p>5 <i>Money Macro Workshop</i>; Amit Khandelwal, Columbia University; 4 p.m.; rm. 395, McNeil Bldg. (Economics).</p> <p>6 <i>Nano Electro-Mechanical Systems (NEMS) Applications in Information Technology and Energy Conversion</i>; Roger T. Howe, Stanford University; 2 p.m.; rm. 337, Towne Bldg. (Electrical and Systems Engineering).</p> <p>7 <i>Effects of Federal Policy to Insure Young Adults: Evidence from the 2010 Affordable Care Act Dependent Coverage Mandate</i>; Kosali Simon, University of Indiana; noon; Colonial Penn Center Auditorium; RSVP: http://ldi.upenn.edu/ (LDI).</p> <p><i>Considerations on Non-Representative Government: The Lottocratic Alternative</i>; Alex Guerrero, philosophy; 3 p.m.; rm. 402, Claudia Cohen Hall (Philosophy).</p> <p>8 <i>Losing a Pet and the Grieving Process</i>; Michelle Pich, Ryan Hospital; 10 a.m.; Hill Pavilion (Penn Vet).</p> <p>10 <i>Chemistry Seminar</i>; Christian Schafmeister, Temple University; noon; Lynch Room, Chemistry Bldg. (Chemistry).</p> <p><i>Mechanics and Mechanotransduction of Tumorigenic Cells</i>; Ning Wang, University of Illinois, Champaign; 2 p.m.; location TBA (Pennsylvania Muscle Institute).</p> <p><i>Asymptotically Exact Inference in Conditional Moment Inequality Models</i>; Tim Armstrong, Yale University; 4:30 p.m.; rm. 410, McNeil Bldg. (Economics).</p> <p>11 <i>A Bayesian Foundation for Classical Hypothesis Testing</i>; Jonathan Weinstein, Northwestern University; 3:30 p.m.; rm. 395, McNeil Bldg. (Economics).</p> <p>12 <i>ASEF Luncheon: Posttraumatic Stress Disorder</i>; Edna Foa, clinical psychology; noon; University Club; \$12/full lunch, \$8/light lunch (ASEF).</p> <p><i>Sorting and the Output Loss Due to Search Frictions</i>; Pieter Gautier, Vrije Universiteit, Amsterdam; 4 p.m.; rm. 395, McNeil Bldg. (Economics).</p> <p>13 <i>International Trade, Technology, and the Skill Premium</i>; Jonathan Vogel, Columbia University; 3:30 p.m.; room TBA, McNeil Bldg. (Economics).</p> <p><i>American Monuments: Archaeology, Heritage, and Identity in the Antebellum United States</i>; James Snead, California State University; 4:30 p.m.; Penn Museum (Penn Cultural Heritage Center).</p> <p><i>Why San Francisco is America's Center of Planning Innovation</i>; Gabriel Metcalf, San Francisco Planning and Urban Research Association; 6 p.m.; B3, Meyerson Hall (PennDesign).</p> <p>14 <i>Title TBA</i>; Paul Teller, UC Davis; 3 p.m.; rm. 402, Claudia Cohen Hall</p>	<p>(Philosophy).</p> <p>15 <i>The Early Middle Kingdom Tomb of Meketre's Estate Manager Wah</i>; Catharine Roehrig, Metropolitan Museum of Art; 3:30 p.m.; Penn Museum; \$8, \$5/ members and PennCard holders (ARCE-PA).</p> <p>17 <i>Synthesis of Bioactive Carbohydrates, Amines and Fluorinated Molecules via Transition Metal Catalysis</i>; Hien Nguyen, University of Iowa; noon; Lynch Room, Chemistry Bldg. (Chemistry).</p> <p><i>A Tear in the Iron Curtain: The Impact of Western Television on Consumption Behavior</i>; Leonardo Bursztyn, UCLA; 3:30 p.m.; rm. 395, McNeil Bldg. (Economics).</p> <p><i>Dynamic Conditional Correlation Models for Realized Covariance Matrices</i>; Luc Bauwens, Center for Operations Research and Econometrics; 4:30 p.m.; rm. 410, McNeil Bldg. (Economics).</p> <p>18 <i>Intrinsic Robustness of the Price of Anarchy</i>; Tim Roughgarden, Stanford University; 3:30 p.m.; rm. 395, McNeil Bldg. (Economics).</p> <p>19 <i>60-Second Lecture: What Would the Founders Think: Political Polarization and the 2012 Election</i>; Mary Frances Berry, history; 11:55 a.m.; Stiteler Plaza (SAS).</p> <p><i>New Drugs, Old Problems: The Sulfonamide Revolution and Pediatric Nurses, 1936-1949</i>; Cynthia Connolly, nursing; noon; rm. 2019, Fagin Hall (Nursing).</p> <p><i>New Transcriptional Roles of the Classic Drosophila Insulator Protein, Suppressor of Hairy-wing</i>; Pamela Geyer, Carver College of Medicine; noon; rm. 252, BRB II/III (CRRWH).</p> <p><i>Organic Seminar</i>; Toshiuki Kan, Shizuoko University, Japan; noon; Lynch Room, Chemistry Bldg. (Chemistry).</p> <p><i>The Wage Penalty for Motherhood: Worse at the Top or Bottom?</i>; Paula England, New York University; noon; rm. 103, McNeil Bldg. (Sociology).</p> <p><i>How to Hit HIV Where It Hurts</i>; Arup K. Chakraborty, MIT; 3 p.m.; Wu and Chen Auditorium, Levine Hall (CBE).</p> <p><i>The Macrodynamics of Sorting Between Workers and Firms</i>; Jeremy Lise, University College, London; 4 p.m.; rm. 395, McNeil Bldg. (Economics).</p> <p><i>Houses of Gods and Kings: Classic Maya Temples and Royal Palaces</i>; Loa Traxler, Penn Museum; 6 p.m.; Penn Museum; \$5, free/members (Museum).</p> <p>20 <i>Single molecule dynamics of spliceosomal RNAs</i>; David Rueda, Wayne State; noon; Austrian Auditorium, Clinical Research Building (Biochemistry and Biophysics).</p> <p><i>PASEF Luncheon: Causes of Lagging Life Expectancy in the United States</i>; Samuel Preston, sociology; noon; University Club; \$12/full lunch, \$8/light lunch (ASEF).</p> <p><i>Polymer Seminar</i>; Kari Dalnoki-Veress, McMaster; 1 p.m.; Lynch Room, Chemistry Bldg. (Chemistry).</p>	<p><i>The Creative Eco-System: Reviewing Sustainability</i>; an interactive forum; Marc Bamuthi Joseph, artist/ educator; 5:30 p.m.; Annenberg Center; tickets/info.: www.annenbergcenter.org (Annenberg).</p> <p><i>Classical Spies: Penn Archaeologists with the OSS in World War II Greece</i>; Susan Heuck Allen, Brown University; 6 p.m.; Penn Museum (Museum).</p> <p>21 <i>Mechanics and Manipulation of a Kirchhoff Elastic Rod</i>; Timothy Bretl, University of Illinois; 11 a.m.; Wu and Chen Auditorium, Levine Hall (GRASP).</p> <p>22 <i>Run! Super-Athletes of the Sierra Nevada</i>; Diana Molina, photographer; Sterling Noren, filmmaker; 2 p.m.; Penn Museum; free w/ admission (Museum). <i>See Exhibits.</i></p> <p>24 <i>Adventures in Chemical Synthesis—Part I: Discovery of Novel Macrolide Antibiotics and Part II: Total Synthesis of Strychnos Alkaloids</i>; Rodrigo B. Andrade, Temple University; noon; Lynch Room, Chemistry Bldg. (Chemistry).</p> <p><i>Title TBA</i>; Richard Assoian, pharmacology; 2 p.m.; Class of '62 Auditorium, John Morgan Bldg (Pennsylvania Muscle Institute).</p> <p><i>Econometrics Workshop</i>; Jean-Marie Dufour, McGill University; rm. 410, McNeil Bldg. (Economics).</p> <p><i>We've Got Issues: Children and Parents in the Age of Medication</i>; Judith Warner, journalist; 5 p.m.; Amado Recital Room, Irvine Auditorium (Medical Ethics).</p> <p>26 <i>60-Second Lecture: Patriotism and the Priority of Global Justice?</i>; Kok-Chor Tan, philosophy; 11:55 a.m.; Stiteler Plaza (SAS).</p> <p><i>Title TBA</i>; Joseph Tash, University of Kansas Medical Center; noon; rm. 132, Hill Pavilion (CRRWH).</p> <p><i>Money Macro Workshop</i>; Randall Wright, Wisconsin University; 4 p.m.; rm. 395, McNeil Bldg. (Economics).</p> <p>27 <i>From Hollywood to Nuremberg: John Ford, Samuel Fuller, George Stevens</i>; Christian Delage, filmmaker; noon; 5:30 p.m.; rm. 401, Fisher-Bennett Hall (Cinema Studies).</p> <p><i>Protein misfolding and ageing in neurodegenerative diseases: protective and toxic mechanisms</i>; Martin L. Duennwald, University of Western Ontario; noon; Austrian Auditorium, Clinical Research Building (Biochemistry and Biophysics).</p> <p><i>Title TBA</i>; Emily Weiss, Northwestern University; 1 p.m.; Lynch Room, Chemistry Bldg. (Chemistry).</p> <p><i>Cellular Senescence: Cause or Consequence of Aging?</i>; Darren Baker, Mayo Clinic College of Medicine; 3:30 p.m.; BRB II/III; RSVP: aging@mail.med.upenn.edu (Institute on Aging).</p> <p><i>Empirical Micro Workshop</i>; Martin Browning, Oxford; 3:30 p.m.; room TBA, McNeil Bldg. (Economics).</p> <p><i>Fine Arts Lecture Series: Jon Kessler</i>; artist; 6:30 p.m.; ICA (Fine Arts; ICA).</p>	<p><i>Cardio Fitness</i>; 5:30-6:30 p.m.; Tue. & Thu.; St. Agatha-St. James Parish Hall; first class free, \$8/class, \$5/students; info: (267) 251-3842.</p> <p><i>New Parents @ Penn</i>; every other Tuesday at 5:30 p.m.; Penn Women's Center; info.: (215) 898-8611 (PWC).</p> <p><i>Working Parents Association</i>; Wednesdays; noon; Penn Women's Center. <i>Penn Knitters</i>; Thursdays; noon; Penn Women's Center; info.: wiedmann@upenn.edu</p> <p>5 <i>Webinar: Food Security in an Urbanizing World</i>; 1:15-2:45 p.m.; info.: penniur.upenn.edu or securityandsustainabilityforum.org (Penn IUR).</p> <p>10 <i>Class of 1923 Ice Rink Opens</i>; public skating; Mondays, Wednesdays and Fridays, noon-1:30 p.m.; Saturdays, 5:45-7 p.m.; Sundays, 1:30-3 p.m.</p> <p>29 <i>Rape Aggression Defense (RAD)</i>; 9 a.m.-3 p.m.; Public Safety Building; RSVP: (215) 898-4481. <i>Continues October 6</i> (Public Safety).</p> <p>30 <i>5k for the IOA and the Memory Mile Walk</i>; 8 a.m./5k, 8:10 a.m./Memory Mile Walk; \$20/prior to 9/15, \$25/after 9/15, \$15/students; registration, info.: www.med.upenn.edu/aging/5K_for_the_IOA.shtml (Institute on Aging).</p> <p>Christian Association</p> <p>4 <i>Slanguage</i>; 2:30-5 p.m.; Tuesdays.</p> <p>5 <i>Prayer and Scripture</i>; 11:45 a.m.; every Monday, Wednesday, Friday.</p> <p>12 <i>Freshmen Bible Study</i>; 6:30 p.m. <i>Also September 19, 26.</i></p> <p>14 <i>Quaker Worship at Penn</i>; 8:30 p.m.</p> <p>25 <i>Christian Association Community Dinner</i>; 6 p.m.</p> <p>HR: Learning and Education</p> <p>Open to Penn faculty and staff. Register: www.hr.upenn.edu/coursecatalog</p> <p>12 <i>Brown Bag Matinee—Managing Stress</i>; 11 a.m.-noon.</p> <p><i>Effective Meetings</i>; webinar for managers and project managers; noon-2 p.m.; \$40.</p> <p>19 <i>Essentials of Management</i>; 10:30 a.m.; \$250.</p> <p>20 <i>Career Focus Brown Bag: Building Workplace Confidence</i>; 1-2 p.m.; free.</p> <p>26 <i>AMA's Improving Your Analytical Skills: Making Information Work for You</i>; 9 a.m.-5 p.m.; \$75. <i>Continues September 27.</i></p> <p>HR: Quality of Worklife</p> <p>Open to Penn faculty and staff. Register: www.hr.upenn.edu/coursecatalog</p> <p>19 <i>Advanced Methods in Handling Difficult and Angry Interactions</i>; noon-1 p.m.; free.</p> <p>26 <i>Relaxing Ways to Manage Your Stress</i>; noon-1 p.m.; free.</p> <p>ISC Technology Training Services</p> <p>ISC Labs, 3650 Chestnut St., 9 a.m.-4:30 p.m. Register: www.upenn.edu/computing/isc/training</p> <p>24 <i>Business Objects Web Intelligence XI Beginning</i>; \$425.</p> <p>25 <i>Excel 2010 Introduction</i>; \$190.</p> <p>26 <i>PowerPoint 2010 Beyond the Basics</i>; \$190.</p>	<p>27 <i>Word 2010 Advanced</i>; \$190.</p> <p>28 <i>Windows 7 Introduction</i>; \$224.</p> <p>Morris Arboretum</p> <p>Register/prices: www.morrisarboretum.org</p> <p>13 <i>Field Identification of Landscape Trees</i>; 9 a.m.-4 p.m. <i>Continues September 14, 9 a.m.-4 p.m.</i></p> <p>19 <i>Early Evening Birding at the Arboretum</i>; 4 p.m.</p> <p>20 <i>New Field Techniques for Tree Evaluation</i>; 9 a.m.-4 p.m.</p> <p>21 <i>Emerald Ash Borer Field Day</i>; 9 a.m.-3 p.m.</p> <p>29 <i>Birding Adventures at the Morris Arboretum</i>; 8-11 a.m.</p> <p><i>Cottage Gardening: Easy Perennials, Biennials, and Roses</i>; 10 a.m.-noon.</p> <p>Department of Recreation: PennFit</p> <p>Info.: www.upenn.edu/recreation/programs/pennfit.html; (215) 898-6100.</p> <p>11 <i>Fitness/Wellness</i>; 7-week program focusing on strength, fitness, and cardiovascular exercise; Tuesdays, 5:30-6:30 p.m.; RSVP.</p> <p>17 <i>Healthy Eating</i>; 6-week program focusing on healthy lifestyle and eating habits; Mondays, 6:30-7:30 p.m.; RSVP.</p> <p>26 <i>Stress Management</i>; 6-week program demonstrating stress management techniques; Wednesdays, 12:15-1:15 p.m.; RSVP.</p> <p>Weigle Info Commons Workshops</p> <p>In Class of 1968 Seminar Room, Van Pelt-Dietrich Library unless otherwise noted. Open to faculty, staff and students. RSVP: http://wic.library.upenn.edu/wicshops</p> <p>4 <i>Blackboard: Office Hours</i>; 10 a.m. <i>Also September 14, 2 p.m.</i></p> <p>5 <i>Blackboard: Basics</i>; 1 p.m. <i>Also September 10, 10 a.m. and September 13, 1 p.m.</i></p> <p>7 <i>WordPress: Basics</i>; 11 a.m.</p> <p>12 <i>Mendeley</i>; 11 a.m.</p> <p><i>From Assignments to References: Planning Your Semester</i>; 5 p.m.</p> <p>13 <i>iMovie</i>; 10:30 a.m.</p> <p>19 <i>Photoshop: Basics</i>; 10 a.m.</p> <p>20 <i>Technically Speaking Series: Flip Cams</i>; 10:30 a.m.</p> <p><i>Mapping and GIS: Easy Mapmaking</i>; 10:30 a.m.</p> <p><i>Blackboard Grade Center</i>; 1 p.m.</p> <p>21 <i>WordPress: Advanced Features</i>; 11 a.m.</p> <p>26 <i>Mapping and GIS: Introduction to ArcGIS</i>; 1 p.m.</p> <p><i>Tools, Not Toys: Time Management Apps for Academic Success</i>; 5 p.m.</p> <p>28 <i>Prezi: Make and Take</i>; 10:30 a.m.</p> <p><i>Photoshop Layers</i>; 2 p.m.</p>

Open the mobile version of the most recent AT PENN calendar by scanning this barcode with your smartphone and scrolling to the bottom of the page.

ART ACROSS CAMPUS



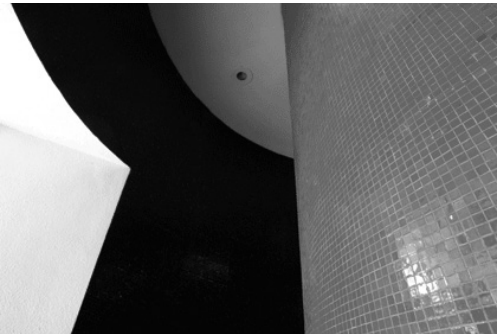
“Point Rose” (1918), by Guy Lobos. This work and other paintings will be featured in the California Impressionism : Masters of Light exhibit. Through October 28 at the Arthur Ross Gallery.



Marie Yoho Dorsey, “where the wild things are...” (2012), etching and hand embroidery on Japanese goyu paper, included with more of Dorsey’s textile art. Through September 28 at the Burrison Gallery.



Jeremy Deller, “Joy in People” banner (made by Ed Hall), from the exhibition of the same name. Through December 30 at the Institute of Contemporary Art.

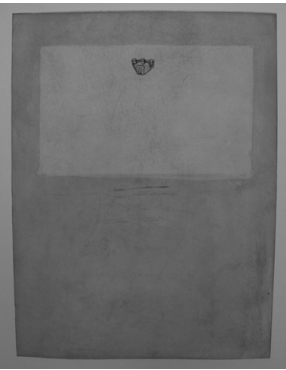


“Wynnewood Lanes, Ardmore, Delaware County, PA” (1966), included in Uncommon Modern: Commercial Vernacular Architecture in Greater Philadelphia, 1937-1970. Through January 18 at the Kroiz Gallery.

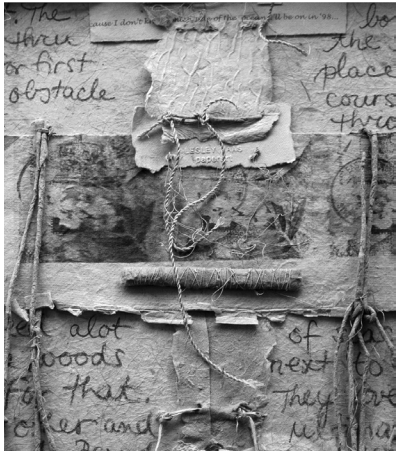
Photo by Linda Lyind



A Censer Lid with Founder Portrait, featured in the Maya 2012: Lords of Time exhibit. Through January 13 at the Penn Museum.



A print by Kaitlin Pomerantz, included in the Imaginary Gardens, Real Toads exhibit. Through October 26 at the Brodsky Gallery, in the Kelly Writers House.



Lesley Haas, detail of “Across the Pond” (1999), handmade, courtesy of the artist. This and other paper works by Haas will be included in the Paper: A Deckled Edge exhibit. Through February 15 at the Rare Book and Manuscript Library.

September

AT PENN