

ACADEMIC CALENDAR

13 First Day of Classes.
18 Martin Luther King, Jr. Day (no classes).

CHILDREN’S ACTIVITIES

9 Magic Circle; story time and crafts followed by International New Year’s celebration; 2 p.m.; Walnut St. West Branch, Free Library of Philadelphia (Free Library of Philadelphia).
23 Persian Cinderella; story time; 11 a.m.; Walnut St. West Branch, Free Library of Philadelphia (Free Library).
29 40 Winks with the Sphinx Sleepover; 6:30 p.m.-9 a.m.; ages 6-12; Penn Museum; \$50, \$45/members; register: www.penn.museum (Museum).

Peanut Butter and Jams: World Cafe Live Shows at 11:30 a.m.; \$10, \$7/children under 12 unless otherwise noted; Info.: www.worldcafelive.com
2 Gustaf Yellowgold’s Show; animated illustrations and story songs.
9 Kidrockers; all ages music and comedy show; \$18, \$16/children.
16 Key Wilde and Mr. Clark; funny, upbeat original songs.
23 Ham and Burger; high-energy hip-hop.

EXHIBITS

Admission Donations and Hours
Arthur Ross Gallery, Fisher Fine Arts Library; free; Tues.-Fri., 10 a.m.-5 p.m.; Sat.-Sun., noon-5 p.m.
Esther M. Klein Art Gallery; free; Mon.-Sat.; 9 a.m.-5 p.m.
GSE Student Lounge; free; Mon.-Fri., 9 a.m.-5 p.m.
Institute of Contemporary Art (ICA); free admission; Wed.-Fri., noon-8 p.m.; Sat.-Sun., 11 a.m.-5 p.m.
International House; Mon-Fri, 10 a.m.-8 p.m.
Kroiz Gallery, Fisher Fine Arts Library; free; Mon.-Fri., 10 a.m.-5 p.m.
Morris Arboretum: \$14; \$12/seniors, \$7/kids 3-17, students; free/members and kids under 3 and members; Daily 10 a.m.-4 p.m.
Penn Museum: \$10, \$7/seniors, \$6/children 6-17 and full-time students w/ PennCard, free/members; Tues.-Sat., 10 a.m.-4:30 p.m.; Sun. 1-5 p.m.
Perelman Center for Advanced Medicine: 3400 Civic Center Boulevard.
The Rotunda: 4014 Walnut St.; free; for hours: (215) 573-3234.
Slought Foundation; free; Wed.-Sat. 1-6 p.m.
Van Pelt-Dietrich Library; free/ID required; for hours see: http://events.library.upenn.edu/cgi-bin/calendar.cgi.
Wistar Institute; free; Mon.-Fri. 9 a.m.-5 p.m.
Upcoming
8 Nikon Small World; photomicrographs taken with powerful microscopes; main atrium, Wistar Institute. Through March 12. See Special Events.
15 Maira Kalman: Various Illuminations (of a Crazy World); first major museum survey of the photography, embroidery, textiles and performance of

illustrator, author, and designer Maira Kalman; reception: January 14, 6 p.m.; ICA. Through June 6.
Video Art: Replay Part 2: Everyday Imaginary; three-part exhibition is centered around three themes prevalent in video art-documentary, animation, and comedy; reception: January 14, 6 p.m.; ICA. Through March 21.
23 Strictly Death: Selected Works from the Richard Harris Collection; explores the iconography of death across a range of artistic practices; reception: 6:30 p.m.; Slought Foundation. Through March 8.
27 Miler Lagos; unique installation of a sculpture of a forest of trees made of recycled newspapers; Arthur Ross Gallery. Through March 21.

Now
Holiday Garden Railway; mini replicas of Philadelphia landmarks decorated for the holidays; Morris Arboretum. Through January 3.
Penn Abroad Photo Contest; showcase of Penn students’ interpretation of the host communities where they lived, studied, and explored; International House. Through January 8.
InLiquid.com Video Installation: Leslie Rogers’s Chinnin’ Out; unscripted video monologues by “chin puppets”; International House. Through January 8.
His Golden Touch: The Gordion Drawings of Piet de Jong; tribute to the illustrator and his work in Gordion, Turkey; Penn Museum. Through January 10.
Ben’s House: Designing History at Franklin Court; explores the making of Franklin Court through original sketches, models and period photographs; Kroiz Gallery. Through January 22.
Painted Metaphors: Pottery and Politics of the Ancient Maya; Penn Museum. Through January 31.
Werner Pfeiffer (censor, villain, provocateur, experimenter):Book-objects & Artist Books; highlights two groups of works commenting and reflecting on the role of the book in the twenty-first century; Kamin Gallery, Van Pelt-Dietrich Library. Through February 12.
Interplay: Art*Audience*Architecture; sculptures from nine artists including Lanny Bergner, Fritz Dietel and Nancy Graves; first floor, Perelman Center for Advanced Medicine. Through February 26 (Arts and the City Year).
Dance with Camera; explores the crossover between artists and dancers who make choreography for the camera; ICA. Through March 21. See Films.
Dissecting the Gross Clinic; tribute to the painting by Thomas Eakins; Kamin Gallery, Van-Pelt Dietrich Library. Through April 31.
The Goodlands: Young Photographers Inspiring Hope in North Philadelphia; photography by children of the Fairhill and Kensington neighborhoods taken between 2000 and 2009; Penn Museum. Through May.
Fulfilling a Prophecy: The Past and Present of the Lenape in Pennsylvania; Penn Museum. Through July.
Flora of Pennsylvania; specimens and botanical drawings celebrating the state’s flora; Morris Arboretum. Through September.
Righteous Dopefiend: An Anthropological Installation on Homelessness, Addiction and Poverty in Urban America;

a photo-ethnography by PIK professor Philippe Bourgois and photographer Jeff Schonberg; Penn Museum. Through May 2010.
Springfield Mills; photography by Guillermo Torres of the Arboretum’s Springfield Grist Mill; lower gallery, Widener Center, Morris Arboretum. Ongoing.
meta Metasequoia; see the world from among a canopy of redwood limbs; Morris Arboretum. Ongoing.
Iraq’s Ancient Past: Rediscovering Ur’s Royal Cemetery; notes, photos and artifacts from Penn’s famous 1922 excavation; Penn Museum. Ongoing.
Collective Imprints; visual art that celebrates the life and history of The Rotunda; The Rotunda. Ongoing.
A Wonderful Life: A Daughter’s Tribute to a Family of Educators; Joan Myerson Shrager’s digital art; Student Lounge, GSE. Ongoing.
Ongoing at the Penn Museum
Amarna: Ancient Egypt’s Place in the Sun; Worlds Intertwined: Etruscans, Greeks and Romans; Canaan & Ancient Israel; Living in Balance: The Universe of the Hopi, Zuni, Navajo and Apache; Mesoamerica; The Egyptian Mummy: Secrets & Science; Raven’s Journey: The World of Alaska’s Native People; Buddhism: History & Diversity of a Great Tradition; Africa: The Cradle of Humankind; Polynesia: ‘ahu’ula + lei niho palaoa; Photographs from the Field; Strokes of Genius: The Art of Annie G. Hunter.

Penn Museum Tours
Tours at 1:30 p.m. Meet at the Warden Garden Entrance. Free w/ admission and w/ PennCard. Info.: www.penn.museum/
9 Highlights of the Collection.
10 Daily Life in Ancient Egypt.
16 Iraq’s Ancient Past: Rediscovering Ur’s Royal Cemetery.
17 Native Americans in the Southwest.
24 Painted Metaphors: Pottery & Politics of the Ancient Maya.
30 The Legacy of Amarna in Ancient Egypt.
31 Highlights of the Collection.

FILMS

26 One Film One Philadelphia; film screening and discussion of Persepolis; 5:30 p.m.; Walnut St. West Branch, Free Library of Philadelphia (Free Library).
International House Screenings w/ English subtitles. For ticket prices see www.ihousephilly.org.
13 Whenever Wednesday: Dance with Camera Cinema Program; films include A Study in Choreography for Camera, Dance in the Sun, BREAKAWAY, From and Island Summer, All That Jazz; \$8, \$5/ICA and International House members; 7 p.m.; International House (ICA). See Exhibits.

MEETING

5 WPPSA; 1-2 p.m.; Bishop White Room, Houston Hall.

MUSIC

Penn Improvisational Jazz Workshop; open jazz jam for musicians of all

January AT PENN

Wherever these symbols appear, more images or audio/video clips are available on our website, www.upenn.edu/almanac/.

abilities; Sundays (except holidays) 4-6 p.m.; Basement, 1920 Commons; Info.: pijw@law.upenn.edu.

Penn Presents Performances at Annenberg Center Tickets: www.pennpresents.org

30 Orchestra Underground: Conversations; tribute to Israel “Cachao” López, homage to New Orleans, and debut from a celebrated new composer; 7:30 p.m.; Harold Prince Theatre; \$25.
Soweto Gospel Choir; vocal ensemble that performs traditional and popular African gospel in 8 languages; 8 p.m.; Zellerbach Theatre; \$20-\$55.

READINGS/SIGNINGS

26 The Poison King: The Life and Legend of Mithradates; lecture and book signing by author and scholar Adrienne Mayor, Stanford University; 6 p.m.; Penn Museum; \$10, \$5/members (Penn Museum).
Penn Bookstore Info.: www.upenn.edu/bookstore
19 Raising a Left-Brain Child in a Right-Brain World; Katharine Beals; 7 p.m.
20 On Becoming a Doctor: Everything They Don’t Tell You, Everything You Need to Know; Tania Heller; 6 p.m.
21 Reality Television and Arab Politics; Marwan Kraidy; 6 p.m.
26 High Frequency Trading: A Practical Guide to Algorithmic Strategies and Trading Systems; Irene Aldridge; 6:30 p.m.
27 More Philadelphia Murals and the Stories They Tell; Jane Golden; 5:30 p.m.

ON STAGE

Penn Presents Performances at Annenberg Center Tickets: www.pennpresents.org
14 River North Chicago Dance Company; Broadway to ballroom, jazz and contemporary; 7:30 p.m.; Zellerbach Theatre; \$24-\$42 (afternoon performances), \$28-\$48 (evening performances). Also January 15, 8 p.m. and January 16, 2 & 8 p.m.
22 The Bald Soprano; Eugene Ionesco’s “one-hour masterpiece of metaphysical nonsense” will be performed every hour for 24 hours!; 8 p.m.; Harold Prince Theatre; \$25.
26 Voices From “Let Me Down Easy” with Anna Deavere Smith; one woman play on the fragility and resistance of the human body; 7 p.m.; Zellerbach Theatre; free tickets required.

SPECIAL EVENTS

2 Winterfest; \$3 admission and free ice skate rental; 5:45 p.m.; Class of 1923 Arena (Class of 1923 Arena).
7 Nikon Small World Exhibition and Microscopy Equipment Demonstration; exhibit and seminars including Martin Chalfie, 2008 Nobel Prize in Chemistry; 1-8 p.m.; Wistar Institute; register: www.wistar.org/openhouse (Wistar). See reverse.
23 World Culture Family Day; Chinese New Year celebration of the Year of the Tiger with music and dance performances, children’s activities, storytelling, arts & crafts, workshops, and Lion Dance parade; 11 a.m.-4 p.m.; free with Museum donation; info.: (215) 898-4890; Penn Museum (Penn Museum).
24 Tu B’Shevat Family Day; musical celebration featuring Andi Joseph–The Musical Mommy; 11 a.m.; Morris Arboretum (Arboretum).

SPORTS

Info./Tickets: www.pennathletics.com
5 (W) Basketball vs. Lehigh; 7 p.m.
9 (W) Swim vs. Harvard; 10 a.m. (M) Swim vs. Harvard; 1:30 p.m. Wrestling vs. Binghamton; 2 p.m. (W) Basketball vs. Princeton; 7 p.m. Wrestling vs. Rider; noon Fencing Philadelphia Invitational; all day
13 (M) Basketball vs. Temple; 7 p.m.
16 (W) Swim vs. Dartmouth, Yale; 10 a.m. (M) Swim vs. Dartmouth, Yale; 10 a.m. Wrestling vs. Virginia; 1 p.m.
20 (M) Basketball vs. LaSalle; 7 p.m.
23 (M) Tennis vs. Drexel; 11 a.m. Gymnastics vs. Rutgers; 1 p.m. (M) Tennis vs. Bucknell; 3 p.m. Fencing Penn State Invitational; time TBA.
25 (M) Basketball vs. St. Josephs; 7 p.m.
27 (M) Tennis vs. Temple; 4 p.m. (W) Squash vs. Princeton; 5 p.m. (M) Squash vs. Princeton; 7 p.m.
29 (M&W) Swim vs. West Chester; 6 p.m. (W) Basketball vs. Yale; 7 p.m.
30 (W) Basketball vs. Brown; 7 p.m.



Above: American Composers Orchestra will perform Conversations, January 30 at the Annenberg Center. Cuban-born composer/saxophonist Paquito D’Rivera joins Orchestra Underground in a concerto for saxophone and double bass. Sebastian Currier and Pawel Wojtasik evoke New Orleans in the aftermath of Hurricane Katrina, with murmurs of water and Dixieland, in their new multimedia work Next Atlantis. See Music.

At right: On January 22 at the Annenberg Center, experience The Bald Soprano—six actors, 24 performances and no breaks. Eugene Ionesco’s “one-hour masterpiece of metaphysical nonsense” will be performed every hour, on the hour, for 24 hours! Suburban life gets an extreme makeover when the Smiths and Martins find themselves trapped in a world of conformity, social manners and paranoid suspicions. Identities shift, secrets are revealed and all sense of decorum and communication breaks down in a delirious rush of words and gestures. As the clock strikes the hour, The Bald Soprano ends where it began. See Onstage.



At right: World Culture Family Day—Chinese New Year Celebration. Welcome in the Year of the Tiger at the 29th annual day-long extravaganza celebration on January 23. Bring the whole family and celebrate the New Year through a wide variety of music and dance performances, children’s activities, storytelling, arts and crafts, and martial and healing arts workshops. The day ends with a drum roll, a roar, and the popular Lion Dance parade. Free with Museum admission donation. See Special Events.



Almanac
3910 Chestnut St., 2nd Floor
Philadelphia, PA 19104-3111
(215) 898-5274 or 5275 FAX (215) 898-9137
E-mail: almanac@upenn.edu
URL: www.upenn.edu/almanac

Unless otherwise noted all events are open to the general public as well as to members of the University. For building locations, call (215) 898-5000 between 9 a.m. and 5 p.m. or see www.facilities.upenn.edu or the University’s website, www.upenn.edu. A phone number normally means tickets, reservations or registration required.
Almanac carries an Update with additions, changes & cancellations if received by Monday at noon prior to the week of publication. University members may send notices for the Update or February AT PENN calendar. The deadline for the February AT PENN is January 12.
Events on this calendar are subject to change. More information can be found on the sponsoring department’s website. Sponsors are listed in parentheses.

TALKS

4 *Nodal Signaling During Pluripotency and Endoderm Formation in hESCs*; Julie Baker, Stanford University; 12:15 p.m.; Auditorium, BRB II/III (Cell and Developmental Biology).

6 *China's First Emperor: Man and the Empire for all Eternity*; Nancy Steinhardt, curator; 6 p.m.; \$10/door, free/members; Penn Museum (Museum).

11 *Cell and Developmental Biology Seminar*; Jeremy Dasen, NYU; 12:15 p.m.; Auditorium, BRB II/III (Cell & Developmental Biology).

13 *State Formation as a Cultural Revolution*; Lauren Ristvet, anthropology; noon; Classroom 2, Penn Museum (Museum).

Maternal Diet and Adverse Neurobehavioral Outcomes: Insight from a Mouse Model; Teresa Reyes, pharmacology; noon; rm. 253, BRB II/III (CRRWH).

14 *Brain-Directed "Treatments" for Anti-Social Behavior: New Opportunities, Old Fears*; Hank Greely, Stanford University; 4 p.m.; Conference Room, Center for Cognitive Neuroscience; RSVP: info@neuroethics.upenn.edu (CNS).

15 *Biochemistry and Biophysics Research Discussion*; Jon Epstein, cell and developmental biology; 4 p.m.; rm. 248, Anatomy-Chemistry Bldg. (Biochemistry and Biophysics).

Founder's Day Symposium: Forbidden Knowledge: Art, Science,

and Censorship; a conversation with the Provost and an interdisciplinary group of scholars in celebration of Benjamin Franklin's 304th birthday; 3 p.m.; Ann L. Roy Auditorium, Claire M. Fagin Hall; info.: www.upenn.edu/faculty_senate/announcements.html (Faculty Senate).

20 *Mechanisms of Lentiviral Resistance to Tetherin BA*; David Evans, Harvard University; noon; Austrian Auditorium, Clinical Research Bldg. (CFAR).

Hasanlu and Urartu; Stephan Kroll, Dyson Fellow; noon; Classroom 2, Penn Museum (Museum).

Epigenetic Control of Heterochromatin Formation and Chromosome Stability in the Female Gamete; Rabindranath De La Fuente, veterinary medicine; noon; rm. 253, BRB II/III (CRRWH).

22 *Biochemistry and Biophysics Research Discussion*; Greg Van Duyne, biochemistry and biophysics; 4 p.m.; rm. 248, Anatomy-Chemistry Bldg. (Biochemistry and Biophysics).

25 *Pathways affecting stem cell self-renewal*; Leonard Zon, Children's Hospital-Boston; 12:15 p.m.; BRB II/III (Cell & Developmental Biology).

26 *Obama's Regulatory Agenda: A One-Year Retrospective*; panel; 4:30 p.m.; room TBA, Jon M. Huntsman Hall (Penn Program on Regulation; Fels Institute of Government).

27 *Penn Museum Scholars Lunch*

Lecture Series; Simon Martin, curator; noon; Classroom 2, Penn Museum (Museum).

Innate Immunity in Acute Injury States and Chronic Debris Deposition: The Examples of Hemolytic Uremic Syndrome, Age-related Macular Degeneration and Preeclampsia; John Atkinson; Washington University; noon; rm. 253, BRB II/III (CRRWH).

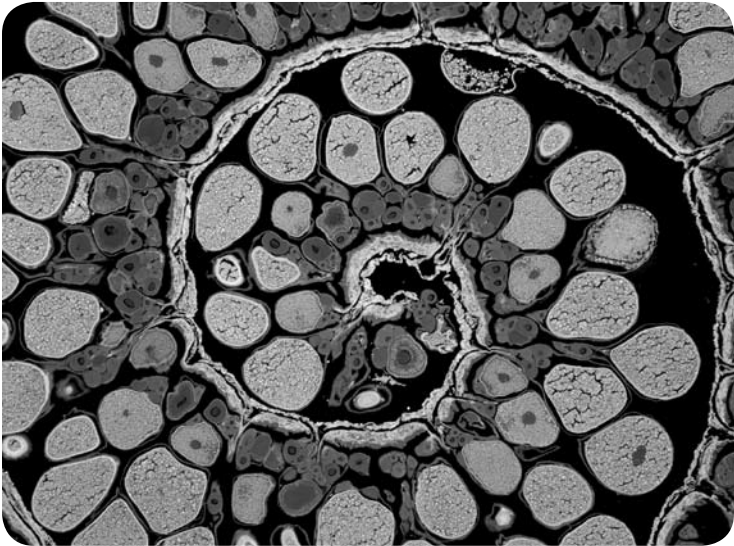
How Forensic Neuroscience Works in the Real World; Ruth Greenberg, Boston University; 4:30 p.m.; rm. 240B, Silverman Hall, Law School (Centre for Forensic Neuroscience).

The East Asian Heartland and its Bronze Age Connections; Victor Mair, East Asian Languages and Civilizations; 5 p.m.; Penn Museum; RSVP: www.humanities.sas.upenn.edu (Museum).

The Straight State: Sexuality and Citizenship in 20th-Century America; Margot Canaday, Princeton University; 4:30 p.m.; Stephanie Grauman Wolf Room, McNeil Center for Early American Studies (Women's Studies; Alice Paul Center; History).

28 *2010 Goldstone Forum: The Risk Fallacy*; Malcolm Gladwell, *The New Yorker*; 4:30 p.m.; Irvine Auditorium (Philosophy Politics and Economics).

29 *Biochemistry and Biophysics Research Discussion*; Scott Diamond, chemical and biomolecular engineering; 4 p.m.; rm. 248, Anatomy-Chemistry Bldg. (Biochemistry and Biophysics).



Nikon's annual Small World photography contest, now in its 35th year, celebrates the complexity and beauty of the world as captured through the microscope. Today's advanced microscopes are opening new windows on the intricate structures and subtle processes of life, leading to scientific discovery and medical progress. Winning images will be displayed in the main atrium at the Wistar Institute from January 8-March 12, and information will be presented on microscopy and photographic techniques. Seminars regarding advanced imaging technologies will take place on January 7 beginning at 1 p.m. *See Exhibits.*

At left: 2009 Fourth Place winner: Anglerfish Ovary, 2-Channel Autofluorescence, 4X objective by James Hayden, The Wistar Institute Microscopy Core Facility.

FITNESS/LEARNING



Above: At the Morris Arboretum, a snow covered Katsura tree, which are native to Japan and China and known for their delicate heart shaped leaves and bright autumn colors.

New Parents @ Penn; meets every other Tuesday at 5:30 p.m.; contact Penn Women's Center (215) 898-8611 for dates.

Jazzercise; 5:30-6:30 p.m.; Tuesdays & Thursdays; Newman Center; \$8/class; \$6/students; Carolyn Hamilton: (215) 662-3293 (days) or (610) 446-1983 (evenings).

Class of 1923 Arena; 3130 Walnut Street; admission: weekday \$5.50, weekend \$6.50, \$1 off w/ PennCard; skate rental \$2.50; group rates and skating lessons offered; hours: www.upenn.edu/icerink. *See Special Events.*

5 *Free Library of Philadelphia's Books Aloud!*; learn skills to read aloud successfully with young children; 6:30 p.m.; RSVP: (215) 686-5372; Walnut St. West Branch, Free Library of Philadelphia (Free Library of Philadelphia).

8 *Self-Defense Awareness & Familiarization Exchange (S.A.F.E.)*; free women-only hands-on safety awareness workshop; 6 p.m.; Benjamin Lounge, Sansom Place West; Info.: (215) 898-4481 (PPD).

30 *Teaching Empathy*; become more empathetic to social issues and tour the exhibition "Righteous Dopefiend"; 9 a.m.-3 p.m.; \$30; info.: (215) 898-4016; Penn Museum (Penn Museum). *See Exhibits.*

Christian Association
Info.: www.upennca.org

5 *Slanguage*; ESL for international students focusing on American slang and social justice; 2:30 p.m.; *Also January 12, 19 and 26.*

6 *Bible Study*; read, study, and talk about the lectionary texts for the upcoming Sunday; 5:30 p.m.; *Also January 13, 20 and 27.*

26 *One Church in the Struggle: Conversations on White Privilege and Racial Injustice*; 6 p.m.

Learning and Education: HR
Open to faculty and staff. Register: www.hr.upenn.edu/coursecatalog

8 *Essentials of Management*; multiple dates and times; \$250.

13 *Brown Bag Matinee—If Looks Could Kill*; noon- 1 p.m.

14 *Managing Cultural Conflict*; noon-1 p.m.

27 *Career Focus Brown Bag—All About Networking*; noon-1 p.m.



Morris Arboretum
Register: (215) 247-5777 ext. 156 or 125.

2 *Wellness Walks*; 10:30 a.m.; Saturdays.

17 *Parks, Plants and People: Beautifying the Urban Landscape*; Lynden Miller, director of the Conservatory Garden, Central Park; 2 p.m.

Quality of Worklife: HR
Open to faculty and staff. Register: www.hr.upenn.edu/coursecatalog

5 *Maintain, Don't Gain Post Holiday Weigh-In*; open to enrolled faculty and staff; 10-11:45 a.m., 12:15-2 p.m. *Also January 6.*

Weigle Info Commons Workshops
Held in Class of 1968 Seminar Room, Van Pelt-Dietrich Library, unless otherwise noted. Open to faculty, staff and students. Register: wic.library.upenn.edu/workshops.

7 *Blackboard Basics*; Goldstein Electronic Classroom; noon. *Also January 11, 2 p.m. and January 26, 1 p.m.*

8 *Blackboard Grade Center*; Goldstein Electronic Classroom; 1 p.m. *Also January 20, noon.*

12 *Blackboard Collaboration Tools*; Goldstein Electronic Classroom; 2 p.m.

13 *Blackboard Test Pools*; Goldstein Electronic Classroom; 2 p.m.

PhotoShop Basics; 10 a.m.

16 *Excel Basics*; 2 p.m.

19 *Zotero*; Goldstein Electronic Classroom; 1 p.m.

iMovie; 10:30 a.m.

20 *InDesign*; noon.

23 *Excel Charts and Graphs*; 2 p.m.

25 *Audacity*; 10:30 a.m.

26 *PowerPoint Basics*; 10:30 a.m.

27 *Photoshop Layers*; 10 a.m.

Refworks; Goldstein Electronic Classroom; 1 p.m.

28 *Excel and Data Analysis*; 10:30 a.m.

Dr. Martin Luther King, Jr. Symposium on Social Change: Penn's Committment to the Legacy

18 *Day of Service Breakfast*; annual breakfast with special guest speaker, performers and introductory remarks by President Amy Gutmann; 8:30-9:45 a.m.; Hall of Flags, Houston Hall (Black Graduate & Professional Students Assembly; MLK Committee).

Free Dog and Cat Vaccination Clinic; the veterinary school is celebrating its 125th anniversary by offering free vaccinations to the first 200 dogs and first 200 cats presented to clinic; Info.: (215) 898-2210; 9 a.m.; Matthew J. Ryan Veterinary Hospital (Matthew J. Ryan Veterinary Hospital).

Children's Banner Painting; children paint commemorative Martin Luther King, Jr. posters and banners while listening to stories about Dr. King's life; adult supervision required; 9:30 a.m.-12:30 p.m.; Auditorium, Houston Hall (Day of Service Committee; MLK Symposium).

Decoration of the Social Justice Chair; an unfinished bench will be decorated with pictures and quotes of Dr. King. "The Seat of Justice" will be placed in various schools throughout the year for students to reflect on the life and contributions of Dr. King; 9:30 a.m.-12:30 p.m.; Auditorium, Houston Hall (MLK Commemorative Symposium Executive Planning Committee; Points of Light Foundation).

Philadelphia Reads: Literacy Project; sort books into age appropriate groupings and create books on tape to promote literacy for Philadelphia youth. Participants are asked to bring a book(s) that discusses multicultural issues relating to children; 9:30 a.m.-12:30 p.m.; Benjamin Franklin Room, Houston Hall (Day of Service Committee; MLK Symposium).

Helping Hands at Houston Hall; create personal gifts that will be donated to West Philadelphia area shelters, nursing homes, hospitals and other charities; 9:30 a.m.-12:30 p.m.; Reading Room and Bodek Lounge, Houston

Hall (Day of Service Committee; MLK Symposium).

MLK Mentoring Project; students from Upward Bound Program and Penn Association of Black Social Workers collaborate in working on variety of projects offered; 9:30 a.m.-12:30 p.m.; Auditorium, Houston Hall (Association for Black Social Work Students; Black Graduate and Professional Students Assembly).

Beautification Projects; paint and beautify local schools and churches. Reflections on Dr. Martin Luther King, Jr. Day of Service will be solicited from volunteers. Light refreshments will be provided. Come dressed for cleaning and painting; 9:30 a.m.-2:30 p.m.; Houston Hall and Beautification Project Locations (MLK Committee).

Food Drive for West Philadelphia's People's Emergency Center; sort through food to be delivered to the People's Emergency Center; 2-5 p.m.; Rodin College House (Rodin College House).

Martin Luther King, Jr. Day Candlelight Vigil; march from W.E.B. Du Bois College House down Locust Walk to reflect on the life of Dr. Martin Luther King, Jr.; 8 p.m.; Du Bois College House and Houston Hall (Alpha Kappa Alpha Sorority, Inc. Gamma Epsilon Philadelphia City Chapter & the Multicultural Greek Council).

19 *Bayard Rustin: The Most Important Man You Never Heard of and Why He Matters Now*; 4-7 p.m. Auditorium, Claire Fagin Hall (School of Social Policy & Practice).

Spreading the Knowledge: Academic Advancements through Scholarly Research; 7 p.m.; Du Bois Multi-Purpose Room (Penn NAACP).

20 *MLK Commemorative Symposium: I Must Go Where The Signs Point: Community in the Age of Wikis*; noon; Ben Franklin Room, Houston Hall (VPUL).

How Racial Statistics Lie and Restructuring for the Future of Social Science; 5:30-7:30 p.m.; Hillel (Center for Africana Studies; African-American Resource Center).

21 *MLK Interfaith Commemoration*; 6 p.m.; poetry, songs, and other performances; Bodek Lounge, Houston Hall (MLK Committee & Office of the Chaplain).

Around the World and Black Film Series: Made in America; this film takes the viewer inside the world of the notorious gangs, the Crips and Bloods; 7 p.m.; Heyer Sky Lounge, Harrison College House (W.E.B. Du Bois College House's Consciousness in Black Film & Theater, Harrison College House & the

International Black Film Festival).

22 *Education of LGBTQ Youth*; discussion about educational options for LGBTQ Youth in Philadelphia/ Nationwide; 5-7 p.m.; Carriage House (Educational Justice Coalition).

The Reverend Dr. Martin Luther King, Jr. Lecture in Social Justice; an annual event which highlights an individual or scholar of African descent, who has committed themselves to social justice; 5:30 p.m.; Zellerbach Theatre, Annenberg Center (Center for Africana Studies & the Annenberg School for Communication).

A Change is Gonna Come: From???; the 2010 Dr. Martin Luther King, Jr. Symposium performance art for social change evening brings a collection of artists to the stage. Spoken word, music and dramatic presentations will center on societal change from what to what; 7:30-9:30 p.m.; 4014 Walnut Street (African-American Resource Center).

23 *6th Annual GeoClan MLK Change Makers Symposium*; the day is structured to include a welcoming address; interactive workshops and discussions addressing key community issues and providing skills to impact pressing social issues and a dynamic panel discussion to connect the legacy of Dr. King to present day organizing efforts and work underway to realize his dream of social equality; noon-6 p.m.; 2nd Floor, Houston Hall (GeoClan).

You Be the Change; inspiring evening designed to motivate people to get involved in the fight for social change and a level playing field for everyone; 6-8 p.m.; Houston Hall (The Men of Light).

25 *No Longer Separate but Not Yet Equal: Race and Education*; a panel discussion; 5-6:30 p.m.; rm. TBA, Graduate School of Education (Greenfield Intercultural Center).

Dare to Dream; find out more about the DREAM act, discussing an estimated 65,000 undocumented students who graduate from high school every year without the opportunity to pursue a higher education because of barriers posed by current immigration laws; 7 p.m.; location TBA (MEChA).

26 *One Church in the Struggle: Conversations on White Privilege & Racial Injustice*; examine white privilege and racial justice by viewing the film "Traces of the Trade," which documents Northerners' complicity in the slave trade; 6 p.m.; CA House (Christian Association).

Voices from "Let Me Down Easy" with Anna Deavere Smith; one-woman play by the award-winning actress, teacher, and playwright; free tickets

required; 7 p.m.; Zellerbach Theatre, Annenberg Center (Arts & City Year, Center for Public Health Initiatives, College Houses and Academic Services, Penn Medicine, Civic House, City of Philadelphia Office of Arts, Culture and Creative Economy, VA Center for Health Equity Research and Health Promotion).

27 *Race Relations at Penn: Past, Present and Future*; view and discuss a film that traces the history of race relations and campus climate at Penn through interviews with students, alumni, faculty, and staff; noon-1:30 p.m.; Houston Hall (United Minorities Council & Division of Public Safety).

LGBT Rights Beyond Marriage; a discussion of the breadth of political issues impacting the LGBT community, including employment discrimination, economic disparities, access to benefits, health care reform and more; 7 p.m.; LGBT Center (LGBT Center).

28 *Reaching the Mountaintop*; prominent speakers, faculty, and student leaders from various communities will

speak about how the communities can continue to uphold Dr. King's legacy and how we can "reach the mountaintop" of equality; 7 p.m.; Bodek Lounge, Houston Hall (Onyx Senior Honor Society, Cipactli Honor Society, Oracle Senior Honor Society).

30 *Discounted Tickets for Graduate Students to Soweto Gospel Choir*; hailing from South Africa, the Grammy award-winning Soweto Gospel Choir is a vocal ensemble performing in eight different languages, in a program of tribal, traditional and popular African gospel; 8 p.m.; Annenberg Center (Graduate Student Center). *See Onstage.*

Feb. 1 *Dr. Helen O. Dickens Commemorative Lecture in Medicine*; the first annual lecture given by a prominent member of the School of Medicine faculty in honor of Dr. Helen O. Dickens, the first African-American woman admitted to the American College of Surgeons, and a former Associate Dean for Minority Affairs in the School of Medicine; 4-5 p.m.; Auditorium, BRB II/III (Office of Diversity and Community Outreach, School of Medicine).



The Grammy-Award winning Soweto Gospel Choir (above) will appear at the Zellerbach Theatre, Annenberg Center on January 30. This South African ensemble performs tribal, traditional and popular African gospel in eight different languages.

January AT PENN